

611730 - HAVEN AT ELGIN

WINDOW SCHEDULE

- ☐ SERIES G200 MODEL G245 FIXED - FIXED
☐ SERIES G200 MODEL G241 FIXED

SCREENS

- ☐ NONE

ACCESSORIES

- ☐ G500 SERIES 1" GLZ. BEAD (NT)
☐ WEEP HOLE COVER (P-T-M)

WARRANTIES

- ☐ Product Warranty: 10 Years
☐ Glass Warranty: 20 Years
☐ Finish Warranty: 20 Years

GLAZING SCHEDULE

- ☐ GL-1 : GLAZING TO BE 1" INSULATED GLASS UNIT CONSISTING OF 1/4" CARDINAL 366 EXTERIOR W/ SS WE SPACER, 1/4" CLEAR INTERIOR.
☐ GL-2 : GLAZING TO BE 1" INSULATED GLASS UNIT CONSISTING OF 1/4" CARDINAL 366 TEMP EXTERIOR W/ SS WE SPACER, 1/4" CLEAR TEMP INTERIOR.

HARDWARE

- ☐ HD-1 NONE

FINISH

- ☐ FINISH TO BE POWDER(METALLIC2605) EXT. PPCMBA5 NON MEDIUM BRONZE METALLIC (STD) - 2605 EXTERIOR AND POWDER(METALLIC2604) INT. PPCMBA4 NON MEDIUM BRONZE METALLIC (STD) - 2604 INTERIOR

IMPORTANT NOTE:

- ☐ THESE SHOP DRAWINGS ARE AN INTERPRETATION OF THE INFORMATION WE HAVE RECEIVED ON THIS PROJECT. THEY MAY VARY FROM THE ARCHITECTURAL DRAWINGS, THEREFORE THEY SHOULD BE THOROUGHLY REVIEWED BY THE ARCHITECT FOR APPLICATION. THESE SHOP DRAWINGS ARE SUPPLIED FOR THE SUBMITTAL PROCESS. ALL PARTIES INVOLVED SHALL REVIEW FOR RESPECTIVE APPLICATIONS. MATERIALS INDICATED ARE NOT TO BE ORDERED OR SUPPLIED UNTIL AN APPROVAL STAMP IS APPLIED. ALL DIMENSIONS, QUANTITIES AND DETAILS ARE AN INTERPRETATION OF THE ARCHITECTURAL DRAWINGS AND MAY NOT REFLECT ACTUAL FIELD CONDITIONS. EACH ITEM MUST BE FIELD VERIFIED FOR ACCURACY IN ORDER TO ELIMINATE ANY PARTIES FROM RECEIVING INACCURATE MATERIALS. UNLESS SPECIFICALLY STATED THE MAXIMUM MATERIAL LENGTH THAT PEERLESS CAN SUPPLY IS TWO HUNDRED AND EIGHTY SIX INCHES.

THESE DRAWINGS DO NOT DEPICT ANY SEALANT OR WEATHERPROOFING AND ARE ONLY INTENDED TO BE USED TO VERIFY THE ACCURACY OF COMPONENTS AND QUANTITIES. THE INDIVIDUAL ITEMS SHOWN IN THE DETAILS AND THE LENGTHS OF THE COMPONENTS DEPICTED IN THE ELEVATION VIEWS ARE EXACT REPRESENTATIONS OF HOW THEY ARE QUOTED OR PROVIDED TO THE JOB SITE AND ARE DERIVED FROM THE BILL OF MATERIALS.

PEERLESS IS RESPONSIBLE FOR PROVIDING WINDOWS AND WINDOW PRODUCTS IN ACCORDANCE WITH APPROVED SHOP DRAWINGS. CUSTOMER IS RESPONSIBLE FOR VERIFYING THAT ALL INFORMATION INCLUDED ON THE SHOPS IS CORRECT AND ACCURATE. SIGNING AND RETURNING THESE SHOP DRAWINGS TO PEERLESS MEANS THAT YOU HAVE THOROUGHLY REVIEWED THEM AND ACCEPT RESPONSIBILITY FOR THEIR ACCURACY.

SPECIAL INSTRUCTIONS

- ☐ CUSTOMER TO VERIFY THAT ALL OPENING DIMENSIONS AND EXISTING WALL CONDITIONS ARE ACCURATE AS SHOWN. IF NOT, PLEASE NOTIFY PEERLESS OF CHANGES.
- ☐ INSTALLER MUST PROPERLY SHIM AND ADJUST ALL OPERABLE WINDOWS FOR PROPER OPERATION. SHIM JAMBS OF ALL WINDOWS AT ALL FASTENER LOCATIONS AND ESPECIALLY AT MEETING RAIL OF SINGLE OR DOUBLE HUNGs AND AT HINGE LOCATIONS OF CASEMENT, AWNING OR HOPPER WINDOWS.
- ☐ INSTALLER IS RESPONSIBLE FOR PROPERLY SEALING AROUND WINDOWS, BETWEEN STACK JOINTS OF WINDOWS, WHERE WINDOWS SET IN SUBSILLS OR ATTACHED PANNING OR ANYWHERE THERE IS AN EXTERIOR JOINT THAT IS NOT FACTORY SEALED OR WEATHERSTRIPPED.
- ☐ INSTALLER MUST APPLY BEAD OF SEALANT TO EXTERIOR WEATHER STRIP BULB OF HEAD AND JAMB RECEPTOR BEFORE SETTING WINDOW INTO IT OR APPLY BEAD OF SEALANT WHERE WINDOW AND RECEPTOR MEET AFTER WINDOWS ARE INSTALLED.
- ☐ SEAL OVER FASTENERS AT EVERY LOCATION THAT FASTENER PIERCES FRAME OF WINDOW.
- ☐ PEERLESS DOES NOT PROVIDE FASTENERS, BLOCKING OR INSULATION.
- ☐ PEERLESS SUGGESTS INSTALLING BATT INSULATION INTO ANY INSTALLATION CAVITY PRIOR TO SEALING OFF WINDOW OPENING.

****APPROVED SHOP DRAWINGS MUST BE USED IN CONJUNCTION WITH PEERLESS PRODUCTS INSTALLATION INSTRUCTIONS.**

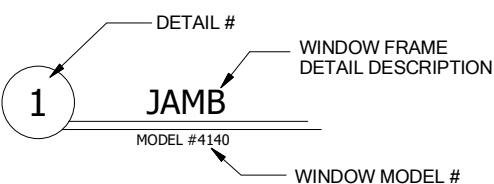
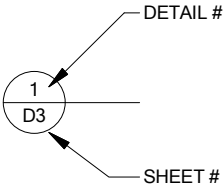
GO TO : <http://peerlessproducts.com/installation>

FOR A COPY OF INSTALLATION INSTRUCTIONS.

GO TO : <http://www.peerlessproducts.com/Products/Test-Reports>

FOR FULL WINDOW INSTALLATION TEST REPORTS

R.O.W. = ROUGH OPENING WIDTH W.M.W = WINDOW MAKE WIDTH
R.O.H. = ROUGH OPENING HEIGHT W.M.H. = WINDOW MAKE HEIGHT
FLP = FULL PERIMETER DRY GLAZE B+8 = BOT AND UP 8" DRY GLAZE
O.F.O. = OUTSIDE FLOOR TO OPENING M.R. = MEETING RAIL LOCATION
M.O.W = MASONARY OPENING WIDTH M.O.H = MASONARY OPENING HEIGHT
F.T.H. = FLOOR TO HANDLE



2403 South Main
Ft. Worth, TX 76101
Phone No. (866) 420-4000
Fax No. (620) 224-3107

The Clerkley Watkins Group

CHKD BY:

DRN BY:

AUTO

SCALE:

N/A

DWG TITLE:

COVER PAGE

DWG. NO.

N/A

JOB NAME:
HAVEN AT ELGIN

ADDRESS 1:

3200 Southwest Freeway Suite 1870

ADDRESS 2:

Houston, TX

GENERAL CONTRACTOR:

SHEET

OF

C1

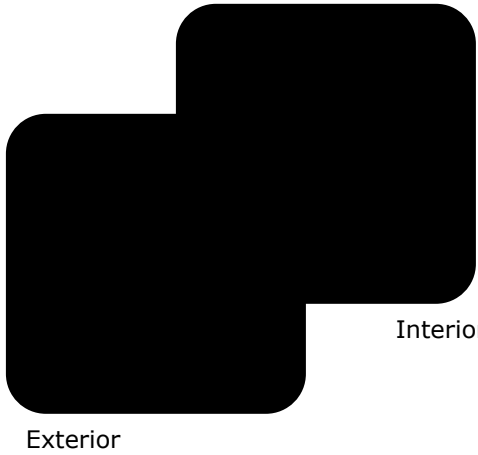
18

COVER PAGE

Peerless Project Finish Selection

Exterior Powder Finish
Powder Color: MEDIUM BRONZE METALLIC (STD) - 2605
Color Code: PD=Powder(Metallic2605) Ext. PPCMBA5 NON
Clear Coat: Not Applicable

Interior Powder Finish
Powder Color: MEDIUM BRONZE METALLIC (STD) - 2604
Color Code: PD=Powder(Metallic2604) Int. PPCMBA4 NON
Clear Coat: Not Applicable
*Finish Warranty Selected: 20 Years



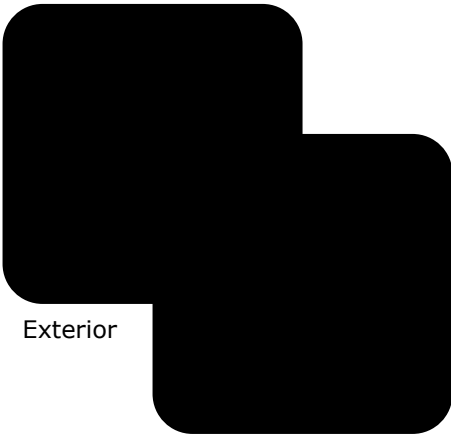
Displayed color is an approximation and may not match finish color.

| Peerless Most Popular | | |
|--|--|--|
| | | |
| PPCBLK5 NON BLACK - 2605 | PPCWGR5 NON WARM GRAY - 2605 | PD000024NON BRILLIANCE 222C / 82253QF |
| | | |
| PPCBNW5 NON BONE WHITE - 2605 | PPCWHI5 NON WHITE - 2605 | PD000025NON BRILLIANCE 011C / 82250QF |
| | | |
| PPCCRC5 NON CHARCOAL - 2605 | PD000020NON BRILLIANCE 005C / 82249QF | PD000026NON BRILLIANCE 013C / 82231QF |
| | | |
| PPCCRM5 NON CHARCOAL METALLIC - 2605 | PD000021NON BRILLIANCE 047C / 82251QF | PD000099NON CLEAR METALLIC - 2605 / 8W236QF |
| | | |
| PPCDBA5 NON DARK BRONZE METALLIC (STD) - 2605 | PD000022NON BRILLIANCE RAL 9007 / 82254QF | |
| | | |
| PPCDBZ5 NON DARK BRONZE - 2605 | PD000023NON BRILLIANCE 066C / 82252QF | |

| | | | | | |
|---|---|--------------------------|---------------------|----------|----------|
| JOB NAME: HAVEN AT ELGIN | Peerless ARCHITECTURAL 2403 South Main Ft. Scott, KS 66701 Phone No. (866) 420-4000 Fax No. (620) 224-3107 | | | | REVISION |
| | Fixed No Vert | | | | |
| ADDRESS 1: 3200 Southwest Freeway Suite 1870 | DRAWN FOR: The Clerkey Watkins Group | | | | XXX |
| ADDRESS 2: Houston, TX | DATE: 09-08-20 | SCALE: N/A | DRN BY: AUTO | CHKD BY: | XXX |
| GENERAL CONTRACTOR: | TIME: 11:47 | DWG TITLE: FINISH | | DWG. NO. | XXX |
| SHEET F2 | OF | | | | XXX |
| 18 | N/A | | | | |

Peerless Project Item Finish

Project Color



Displayed color is an approximation and may not match finish color.

Associated Marks

- A
- C
- D
- E
- F
- G
- Attic Stock 03248000PO
- Attic Stock 56000059PO

| | | | | | | | | | | |
|----|---------------------|-----------------------------------|---|---------------|------------|--------|----------|------|----------|--|
| F3 | JOB NAME: | HAVER AT ELGIN | <div><div>2403 South Main Ft. Scott, KS 66701 Phone No. (866) 420-4000 Fax No. (620) 224-3107</div></div> | REVISION | | | | | | |
| | ADDRESS 1: | 3200 Southwest Freeway Suite 1870 | | Fixed No Vert | | | | | | |
| 18 | ADDRESS 2: | Houston, TX | The Clerkley Watkins Group | | XXX | | | | | |
| | GENERAL CONTRACTOR: | | DATE: | 09-08-20 | SCALE: | N/A | DRN BY: | AUTO | CHKD BY: | |
| | | | TIME: | 11:47 | DWG TITLE: | FINISH | DWG. NO. | N/A | | |

Insulated Glazed Unit GL-2

IG Thickness: 1.0

IG Make-Up -

☒ Air

☐ Argon

☐ Breather Tubes

Exterior- 1/4" Cardinal 366 Temp

☐ Annl'd

☒ Temp

☐ H.S.

(Thickness/Type)

Spacer: Stainless Steel XL Edge Spacer

Interior- 1/4" Clear Temp

☐ Annl'd

☒ Temp

☐ H.S.

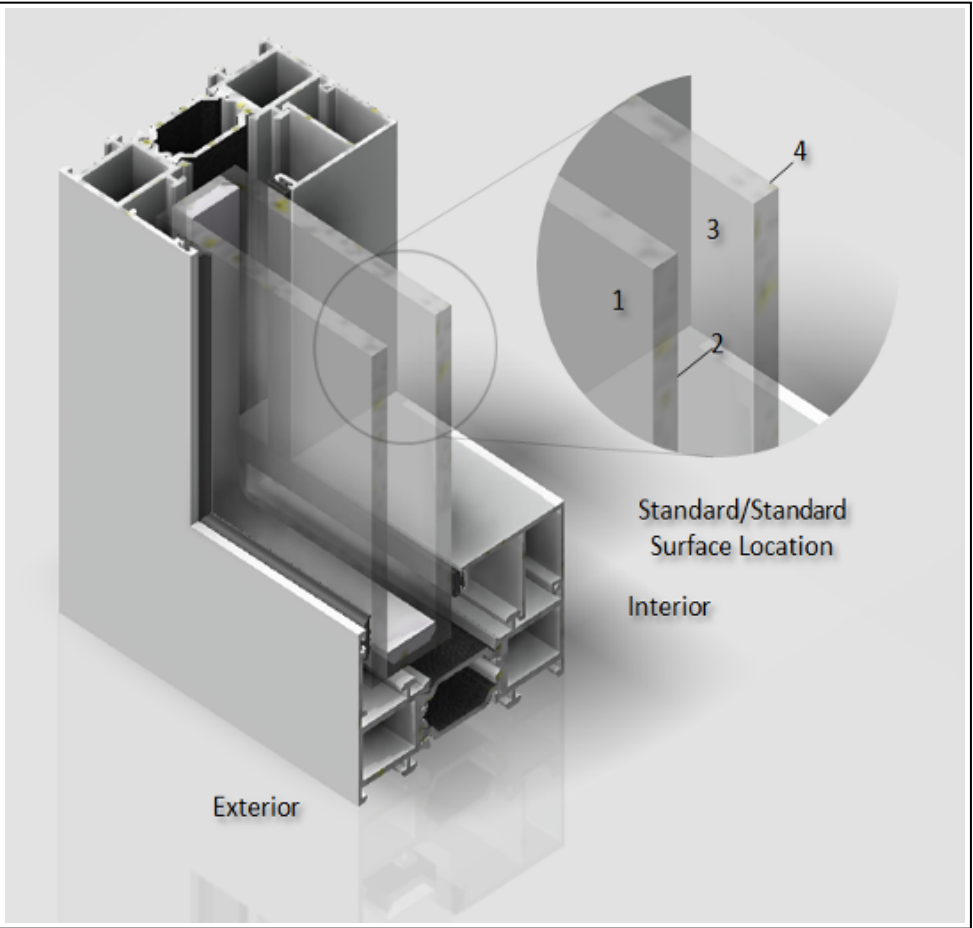
(Thickness/Type)

*Special Glass Requires Additional Information

Soft Coat (Sputter) Low-E- Ext: LoE366

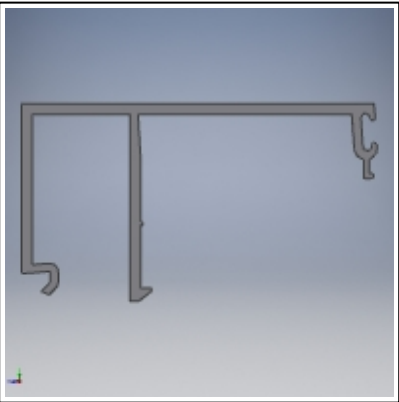
Surface- Ext: 2

(Std. Cardinal 270)



This image locates surfaces only and does not represent your actual product.

| | | | | |
|-----------------------------|--|---------------------|-----------------|----------|
| JOB NAME: HAVEN AT ELGIN | 2403 South Main Ft. Worth, TX 76101 Phone No. (866) 420-4000 Fax No. (620) 224-3107 | | REVISION | |
| | ADDRESS 1: 3200 Southwest Freeway Suite 1870 | | Fixed No Vert | |
| ADDRESS 2: Houston, TX | The Clerkey Watkins Group | | XXX | |
| GENERAL CONTRACTOR: | DATE: 09-08-20 | SCALE: N/A | DRN BY: AUTO | CHKD BY: |
| | TIME: 11:47 | DWG TITLE: GLASS | DWG NO.: | XXX |
| | | | | XXX |



G500 SERIES 1" GLZ. BEAD (NT)

| | |
|-------------------|----------|
| Lineal 03248000PO | |
| Length(in) | Quantity |
| 97.3125 | 16 |

| | | | | | | |
|--------------------|---|---|--------------------------|------------------------------|------------------------|----------|
| SHEET L5 | JOB NAME: HAVEN AT ELGIN | <div><div>2403 South Main Ft. Worth, TX 76101 Phone No. (866) 420-4000 Fax No. (620) 224-3107</div></div> <div>The Clerkley Watkins Group</div> | REVISION | | | |
| | ADDRESS 1: 3200 Southwest Freeway Suite 1870 | | Fixed No Vert | | | |
| | ADDRESS 2: Houston, TX | | xxx | | | |
| | GENERAL CONTRACTOR: | | xxx | | | |
| OF 18 | | DRAWN FOR: | DATE: 09-08-20 | SCALE: N/A | DRN BY: AUTO | CHKD BY: |
| | | | TIME: 11:47 | DWG TITLE: LINEALS | DWG. NO. N/A | xxx |



02/2020

Window Pallets from Peerless

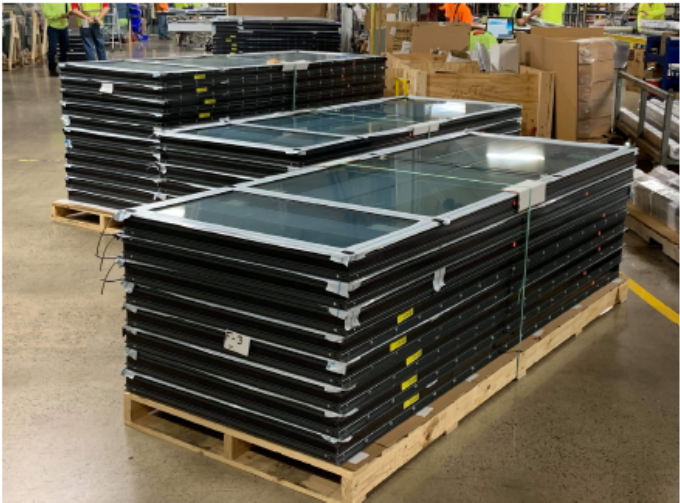
- Benefits of the Peerless pallet system:**
- Windows can be built early (storage not included)
 - Easier to read packing slips
 - More visibility on shipments
 - Less shipping & handling damage
 - Easier & faster unloading of windows at jobsite
 - Less personnel required for huge labor savings
 - Pallets keep windows protected & in perfect condition

*Pallets can be longer if full length sticks are requested by our customers.



We recommend having a lull or another piece of equipment with 8 foot forks.

Maximum Pallet Height = 105"
Maximum Pallet Length = 132"
Please be ready to accommodate these sizes!



Statement from Customer on shipping system:
"The Peerless palletizing system allows me to unload and move my windows to their jobsite location faster than ever before. I use one guy with a forklift now instead of eight. This saves me a lot on my labor costs. Plus, my windows are protected in pallets so they stay in perfect condition while on my jobsite waiting to be installed."

| | | | | | | | | | | |
|----|---------------------|-----------------------------------|-------|---|--|----------|---------------|------|----------|-----|
| 06 | JOB NAME: | HAVEN AT ELGIN | | Peerless ARCHITECTURAL WINDOWS & DOORS | 2403 South Main Ft. Scott, KS 66701 Phone No. (866) 420-4000 Fax No. (620) 224-3107 | REVISION | Fixed No Vert | | | |
| | ADDRESS 1: | | | | | XXX | | | | |
| | ADDRESS 2: | 3200 Southwest Freeway Suite 1870 | | | | XXX | | | | |
| 18 | OF | Houston, TX | | The Clerkley Watkins Group | | XXX | | | | |
| | GENERAL CONTRACTOR: | | DATE: | 09-08-20 | SCALE: | N/A | DRN BY: | AUTO | CHKD BY: | |
| | | | TIME: | 11:47 | DWG TITLE: | | PALLETIZING | | DWG. NO. | N/A |

Pallet Lifting Safety

Pallets hoisted with straps only needs to use a spreader bar!



Peerless Product Delivery Agreement for Production

Peerless takes meeting your project schedule very seriously. To provide great on-time service we need to continually flow finished goods from our facility to your project locations. If finished product is unable to be shipped to the designated location due to any reasons beyond Peerless' control by the Project Delivery Date (PDD) then Undelivered Product Fees will occur for these finished goods according to the table. Truck loads that have not been shipped within 14 calendar days of the PDD will be invoiced for the full sales value on the 15th day.

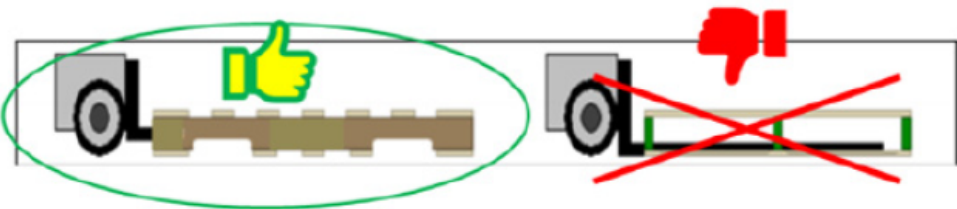


| Undelivered Product Fees for Finished Goods | |
|---|---------------|
| Projected Delivery Date (PDD) + 7 calendar days | Free |
| Days 8-14 | \$50 per day |
| 15+ Days | \$100 per day |

Ask us about the New Conestoga Trailer Option!



Pallets should always be picked up from the end and never from the side.



Standard shipping utilizes 53' enclosed trailers.

02/2020

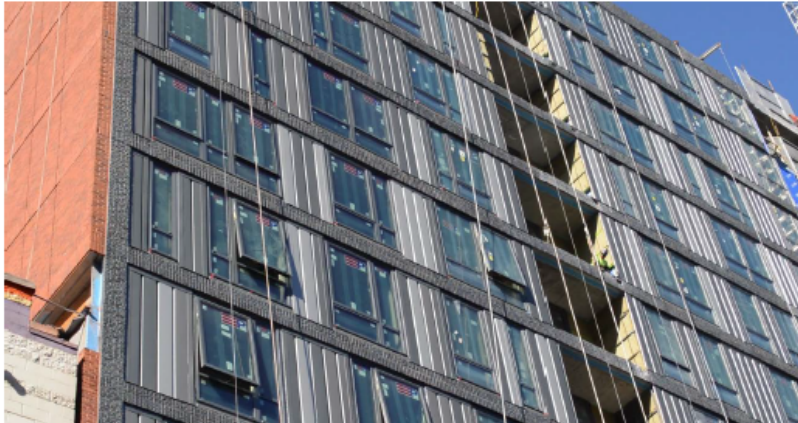


| | | | | | |
|---|--|--|---------------------------|-----------------|----------|
| JOB NAME: HAVEN AT ELGIN | | 2403 South Main Ft. Scott, KS 66701 Phone: (620) 220-4000 Fax: (620) 224-3107 | | REVISION | |
| ADDRESS 1: 3200 Southwest Freeway Suite 1870 | | | | Fixed No Vert | |
| ADDRESS 2: Houston, TX | | DRAWN FOR: The Clerkley Watkins Group | | XXX | |
| GENERAL CONTRACTOR: | | DATE: 09-08-20 | SCALE: N/A | DRN BY: AUTO | CHKD BY: |
| | | TIME: 11:47 | DWG TITLE: PALLETIZING | DWG. NO. N/A | XXX |
| SHEET 07 | | OF 18 | | | |



Customer Logo Stickers

We want our customers to succeed and to keep growing as businesses, one way we can help is to utilize each window as an advertising opportunity with the Peerless logo and our customer's logos. Your logo can be placed directly onto the preserve film right under the Peerless logo and stay on the duration of installation and then be easily removed when the preserve film is removed. We have setup a printer in Nevada ISG(Innovative Solutions Group) facility to print our customer's logo stickers. If you want to see an example of what your sticker can look like, send your logo files (.ai, .pdf, or .jpg at 300 dpi sized 20" x 10") to slero@peerlessproducts.com, we can also print proofs and place them on a recent project.



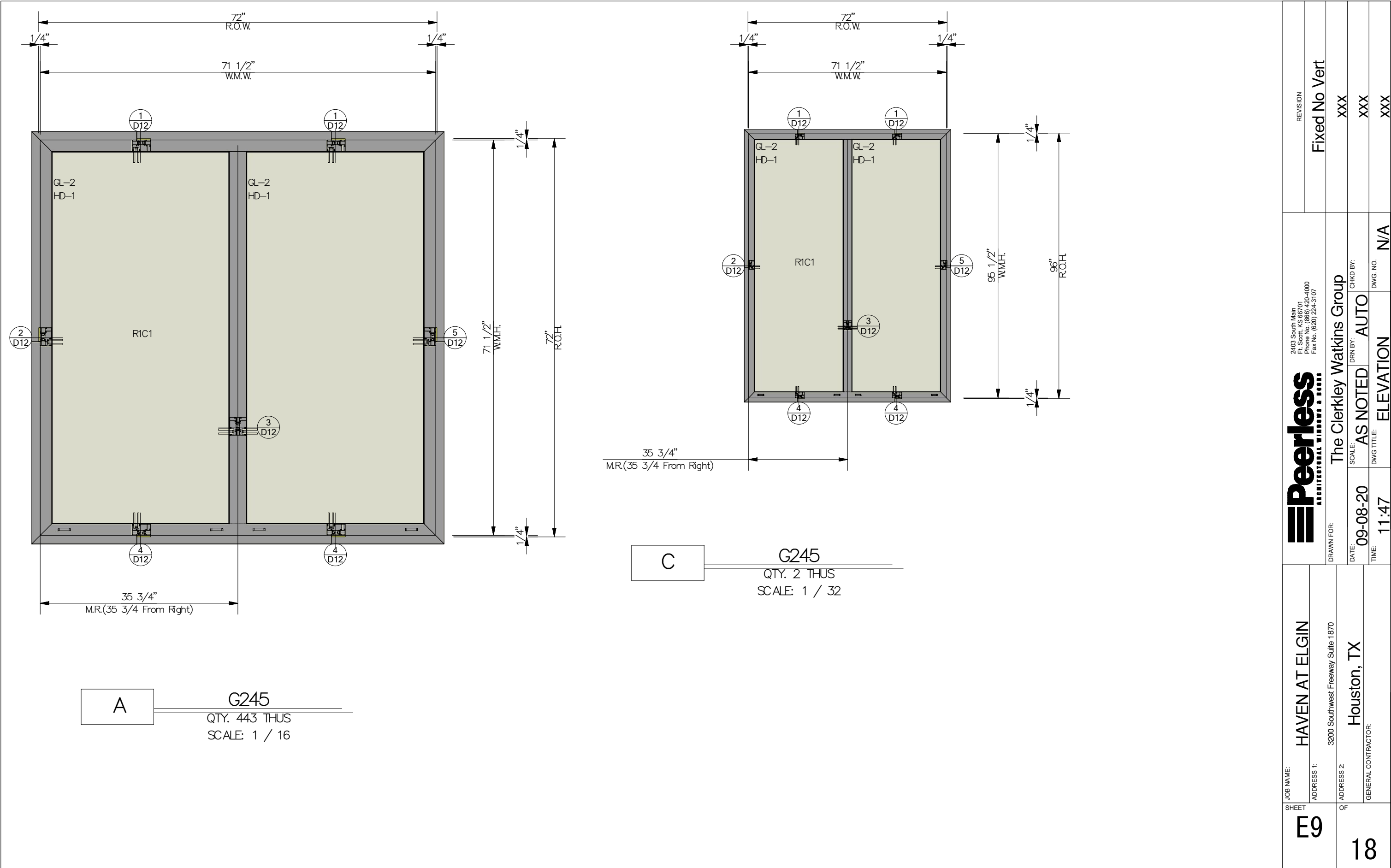
Example of Sticker

Andres Construction • Dallas • Austin • Houston • www.andresconstruction.com



082020

| | | | | | | | |
|--------------------|---|---|--|----------------------------|----------------------------|------------------------|----------------------|
| SHEET 08 | JOB NAME: HAVEN AT ELGIN | DRAWN FOR: The Clerkley Watkins Group | 2403 South Main Ft. Scott, KS 66701 Phone No. (866) 420-4000 Fax No. (620) 224-3107 | | | | REVISION |
| | ADDRESS 1: 3200 Southwest Freeway Suite 1870 | | | | | | Fixed No Vert |
| OF 18 | ADDRESS 2: Houston, TX | DATE: 09-08-20 | SCALE: N/A | DRN BY: AUTO | CHKD BY: XXX | | |
| | GENERAL CONTRACTOR: | | TIME: 11:47 | DWG TITLE: LOGOS | | DWG. NO. N/A | XXX |



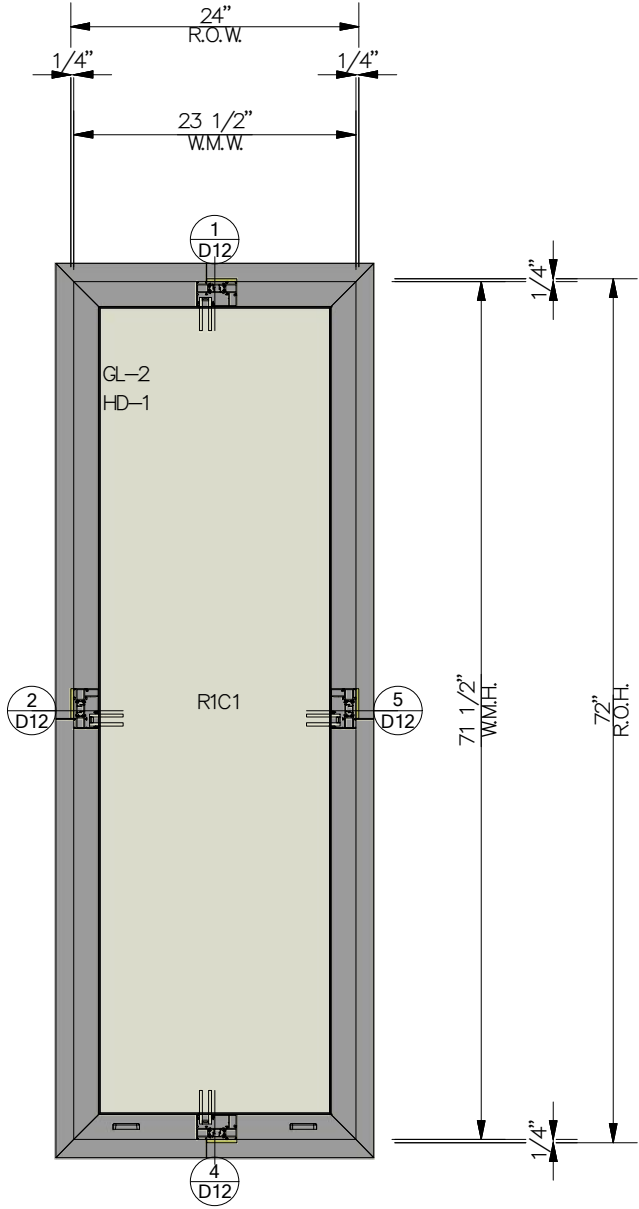
| | | | | | | |
|---------------------|---|--|--|--------------------------------|------------------------|----------|
| SHEET E9 | JOB NAME: HAVEN AT ELGIN | <div><div>The Clerkey Watkins Group</div></div> | 2403 South Main Ft. Scott, KS 66701 Phone No. (866) 420-4000 Fax No. (620) 224-3107 | | REVISION | |
| | ADDRESS 1: 3200 Southwest Freeway Suite 1870 | | Fixed No Vert | | | |
| | ADDRESS 2: Houston, TX | | XXX | | | |
| | GENERAL CONTRACTOR: | | XXX | | | |
| OF 18 | DRAWN FOR: | | DATE: 09-08-20 | SCALE: AS NOTED | DRN BY: AUTO | CHKD BY: |
| | | | TIME: 11:47 | DWG TITLE: ELEVATION | DWG. NO. N/A | |

D

G241

QTY. 67 THUS

SCALE: 1 / 16

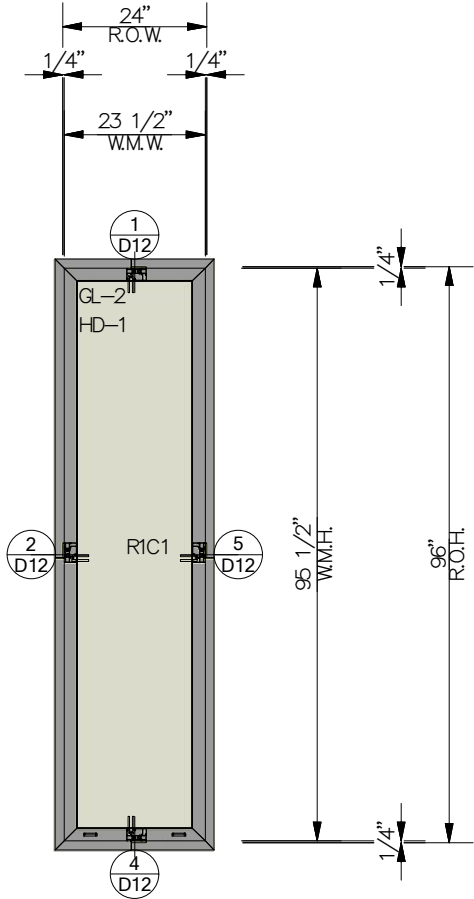


E

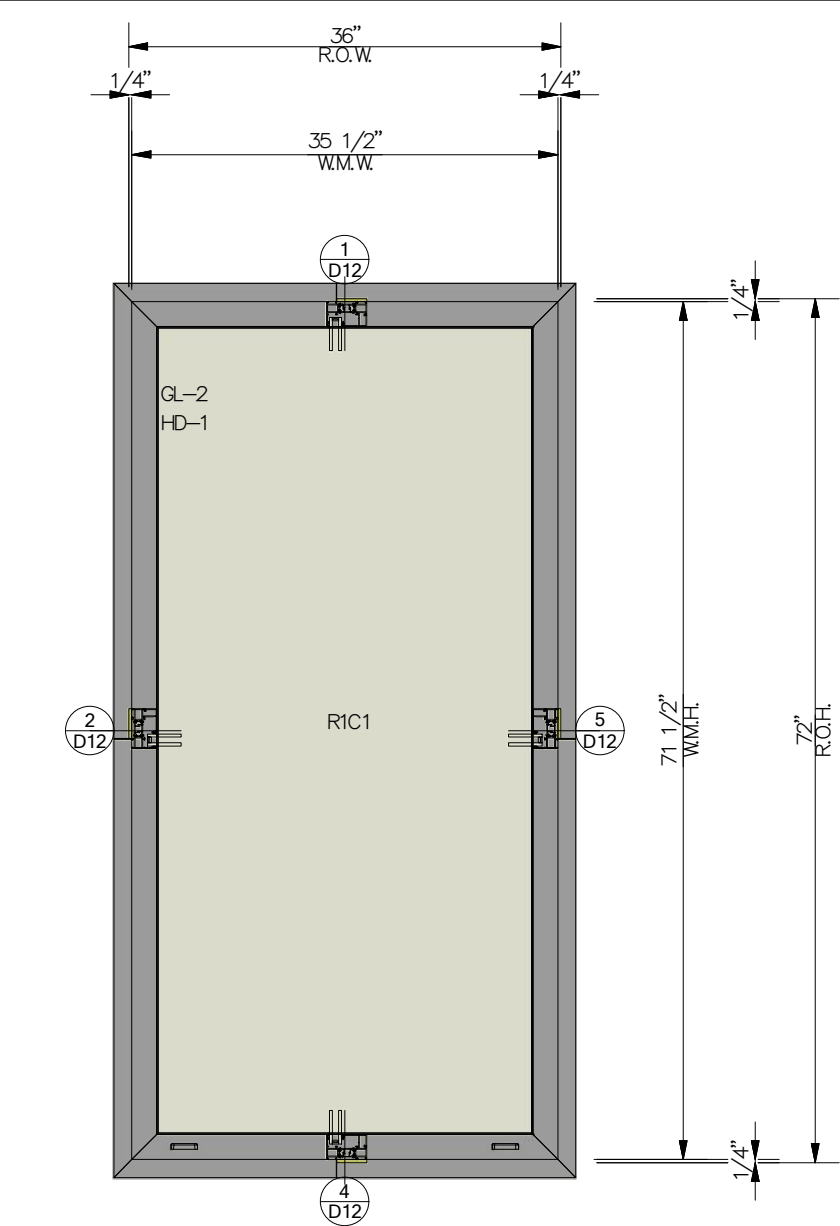
G241

QTY. 2 THUS

SCALE: 1 / 32

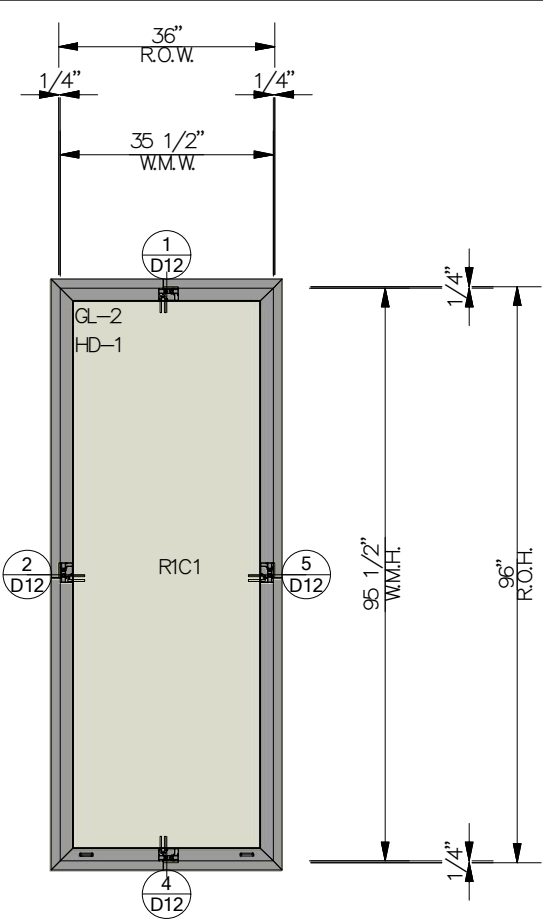


| | | | | |
|-----------------------------|--|-------------------------|-----------------|-----|
| JOB NAME: HAVEN AT ELGIN | 2403 South Main Ft. Worth, TX 76101 Phone No. (866) 420-4000 Fax No. (620) 224-3107 | | REVISION | |
| | ADDRESS 1: 3200 Southwest Freeway Suite 1870 | Fixed No Vert | | XXX |
| ADDRESS 2: Houston, TX | DATE: 09-08-20 | SCALE: AS NOTED | DRN BY: AUTO | XXX |
| GENERAL CONTRACTOR: | TIME: 11:47 | DWG TITLE: ELEVATION | DWG. NO. N/A | XXX |
| SHEET E10 | OF 18 | ELEVATION | | |

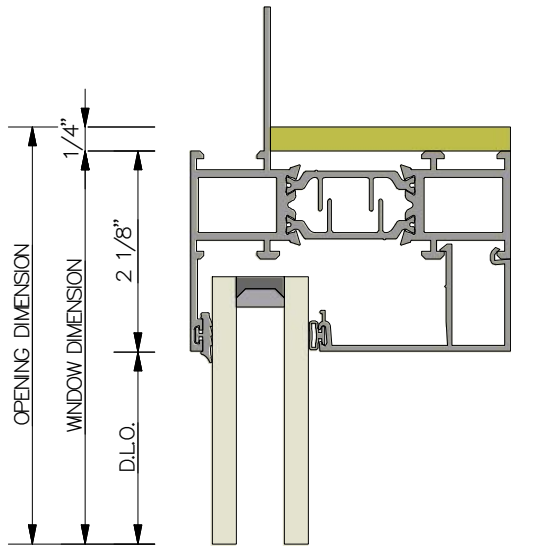


F ————— **G241**
QTY. 24 THUS
SCALE: 1 / 16

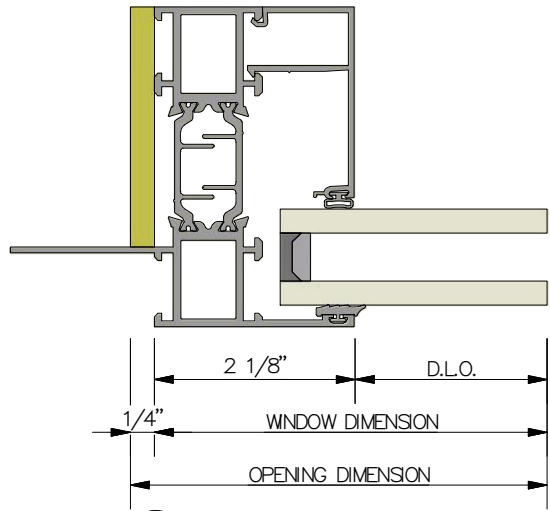
G ————— **G241**
QTY. 3 THUS
SCALE: 1 / 32



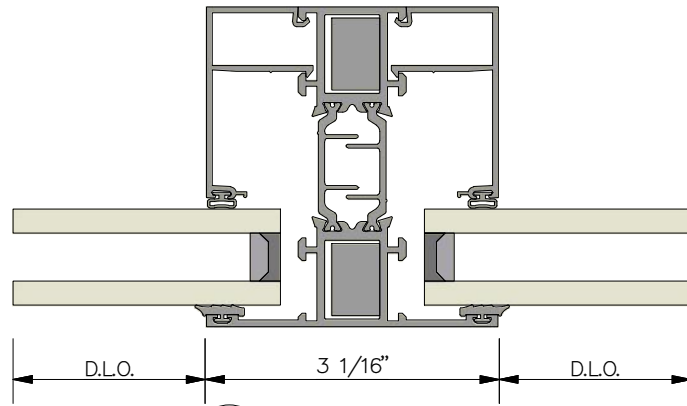
| | | | | |
|------------------------------------|--|-------------------------|-----------------|----------|
| JOB NAME: HAVEN AT ELGIN | 2403 South Main Ft. Worth, TX 76101 Phone No. (866) 420-4000 Fax No. (620) 224-3107 | | REVISION | |
| | ADDRESS 1: 3200 Southwest Freeway Suite 1870 | | Fixed No Vert | |
| ADDRESS 2: Houston, TX | The Clerkley Watkins Group | | XXX | XXX |
| GENERAL CONTRACTOR: | DATE: 09-08-20 | SCALE: AS NOTED | DRN BY: AUTO | CHKD BY: |
| | TIME: 11:47 | DWG TITLE: ELEVATION | DWG NO. | N/A |
| SHEET E11 | OF 18 | | XXX | |



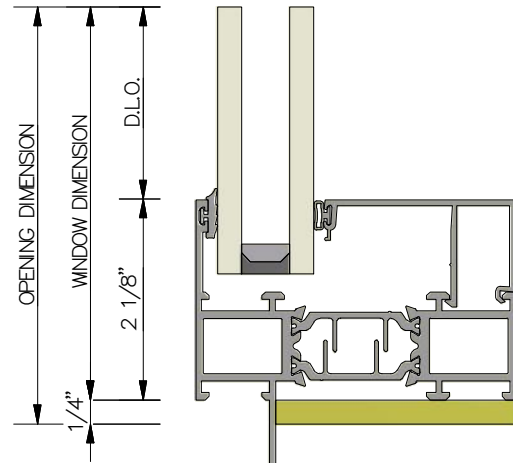
1 HEAD
Frame Depth: 3.3125



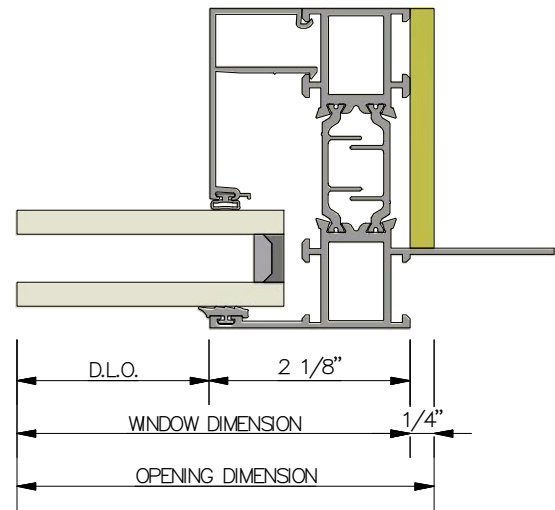
2 JAMB
Frame Depth: 3.3125



3 MEETING RAIL
Frame Depth: 3.3125



4 SILL
Frame Depth: 3.3125



5 JAMB
Frame Depth: 3.3125

| | | | | | | | |
|---|--|---|----------------------|-----------------|-----------------|---------------|-----|
| JOB NAME: HAVEN AT ELGIN | | <div><div>2403 South Main Ft. Scott, KS 66701 Phone No. (866) 420-4000 Fax No. (620) 224-3107</div></div> | | | | REVISION | |
| ADDRESS 1: 3200 Southwest Freeway Suite 1870 | | | | | | Fixed No Vert | |
| ADDRESS 2: Houston, TX | | DRAWN FOR: The Clerkley Watkins Group | | | | XXX | |
| GENERAL CONTRACTOR: | | DATE: 09-08-20 | SCALE: 1 / 2 | DRN BY: AUTO | CHKD BY: | | XXX |
| | | TIME: 11:47 | DWG TITLE: DETAIL | | DWG. NO. N/A | | XXX |
| D12 | | OF | | 18 | | | |



Installation Instructions

These instructions are recommended installation instruction procedures.
Please refer to project specific shop drawings (if applicable).

2403 S Main St, Fort Scott, KS 66701
Toll Free: 800-279-9999 • Local: 620-223-4610
Fax: 620-224-3107 • peerlessproducts.com

| | | | | | | | | | | | |
|-----------------------------|--------------|---|---------------------------|---------------------|--|-------------------|----------------|---------------|-----------------|----------|------------------------------------|
| JOB NAME: HAVEN AT ELGIN | SHEET 113 | ADDRESS 1: 3200 Southwest Freeway Suite 1870 | ADDRESS 2: Houston, TX | GENERAL CONTRACTOR: | DRAWN FOR: The Clerkley Watkins Group | DATE: 09-08-20 | TIME: 11:47 | SCALE: N/A | DRN BY: AUTO | CHKD BY: | REVISION |
| | | | | | | | | | | | Fixed No Vert XXX XXX XXX |
| DWG. NO. N/A | | | | | | | | | | | |

MASONRY CLEANING

Over the past quarter century the fenestration industry has created a niche for high performance windows only to have these windows immediately after installation show signs of decay and destruction. The culprit, the misuse of cleaning solutions and inadequate technical training by builders and subcontractors concerning masonry cleaning.

For decades muriatic acid and other proprietary solvents have been used by builders and subcontractors to clean masonry and other materials following construction. But recently, due to cost and time pressures, the concentration of muriatic acid has increased and is deteriorating glass and window components alike.

According to Greg Carney, technical director for the Glass Association of North America, “From the moment they arrive on a construction site, windows, doors and skylights are frequently exposed to harmful chemicals, construction debris, and damage from other construction trades-with muriatic acid exposure certainly being a critical problem.”

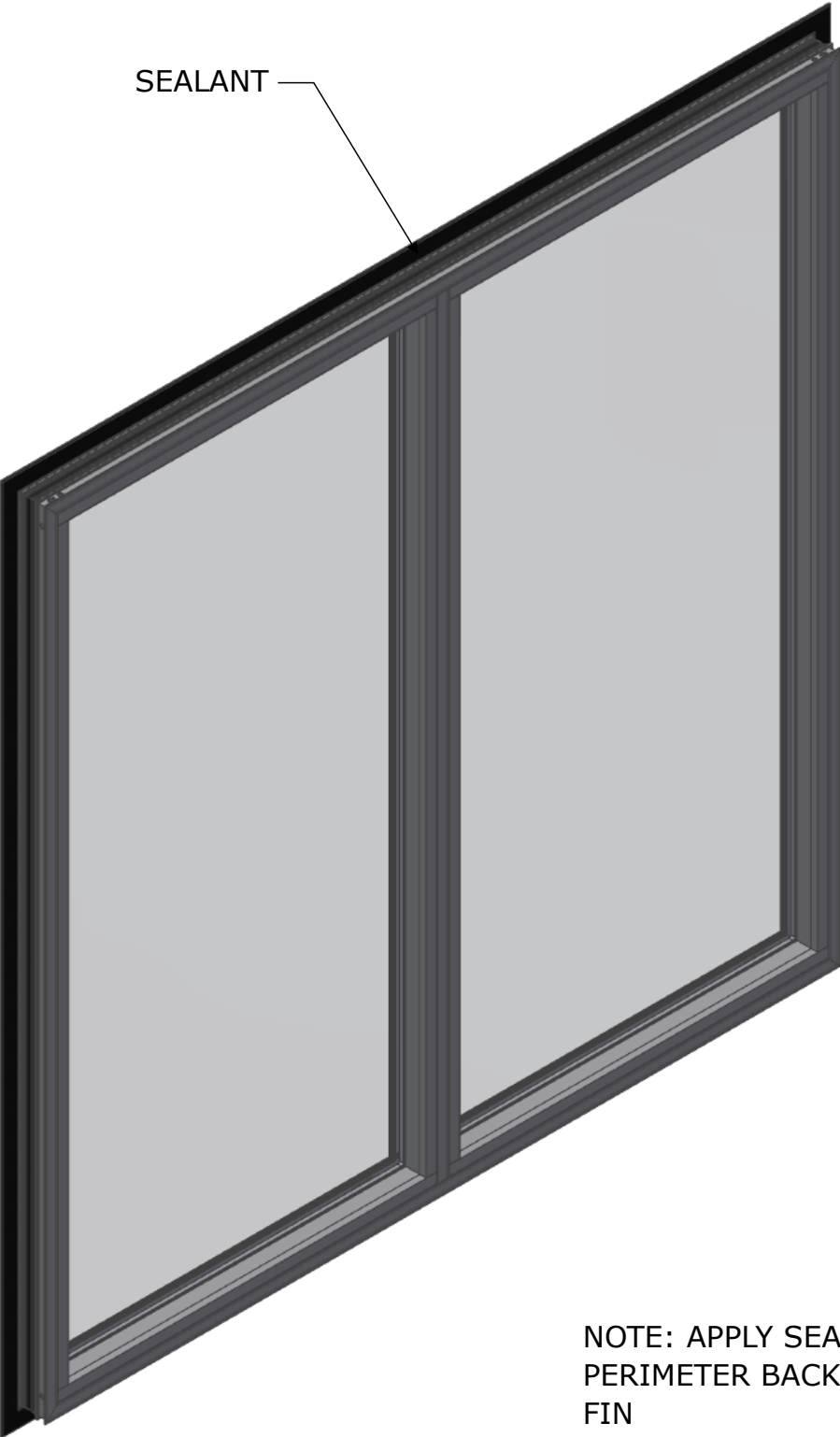
These new high performance windows frequently contain glass with low-emissivity coatings. These coatings are usually the first thing to show deterioration. As soon as 24 hours the glass can turn black and spread from the perimeter inward. The acid runoff will eventually collect on the windowsill staining the frame. After seeping inside the window insulating unit, the acid will ruin the interior low-emissivity coating as well as other individual components. The anodized aluminum and painted surfaces will develop blisters, holes, as well as other damage shortly after exposure.

To combat this situation, the fenestration industry and the construction industry have been discussing guidelines and alternatives to the current practices. First and foremost the Brick Institute of America recommends using only a 10% concentration of muriatic acid. Greater concentrations of muriatic acid cause damage not only to glass but also to brick and mortar. Furthermore, BIA also recommends saturating any brickwork with water immediately before and immediately after using chemical solvents. The next step, according to BIA’s recommendations, is to discontinue the use of muriatic acid for cleaning masonry altogether. “Muriatic acid is an industrial chemical that is not well-suited for masonry cleaning,” explains Gregg Borchelt, vice president of research and engineering for BIA.

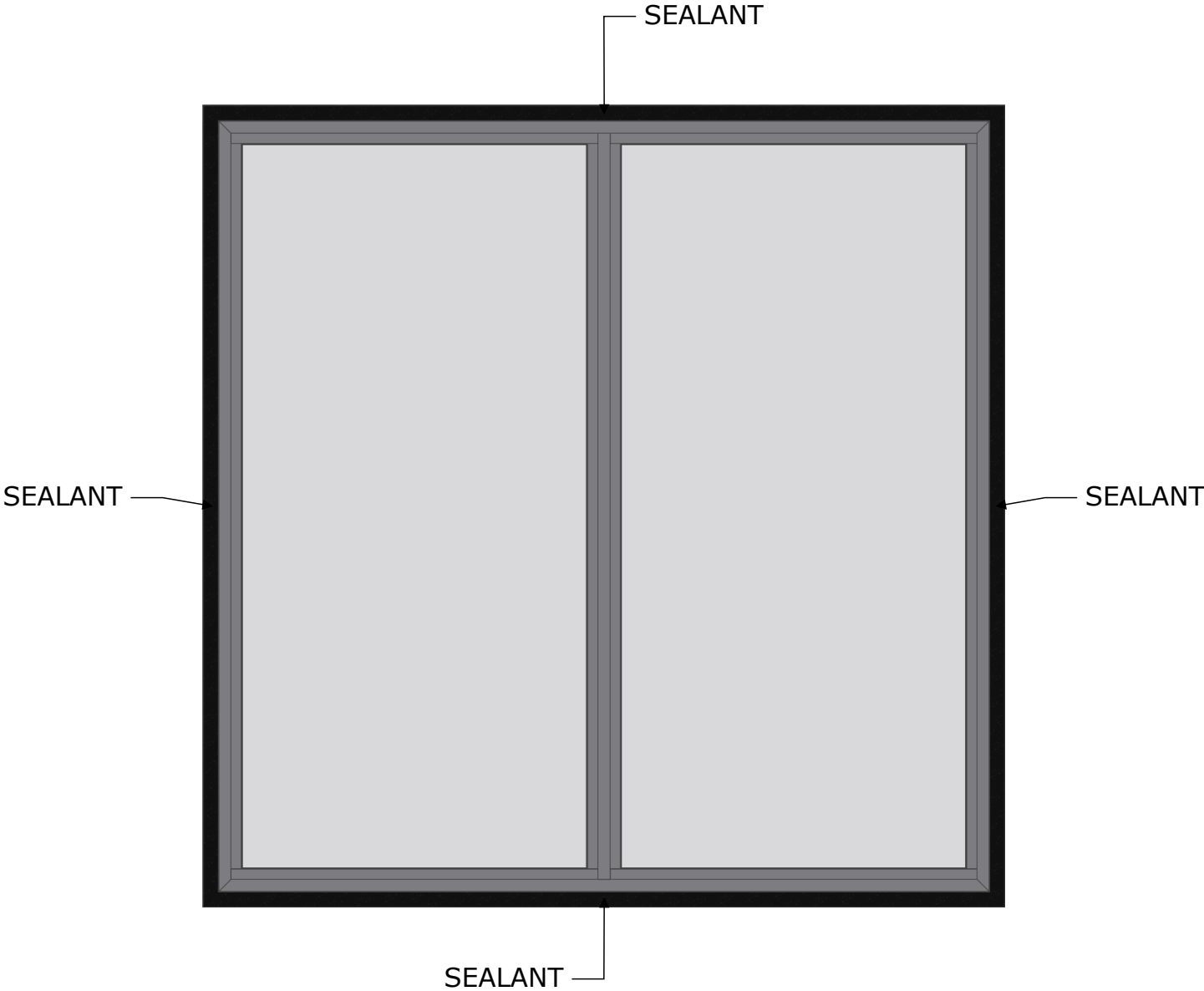
“Our organization recommends a proprietary cleaning solution that includes buffering agents to increase the effectiveness of the acid content, while also protecting bricks, mortar, and ancillary materials from corrosion.” The advantage to these solutions is that they are specially formulated for masonry cleaning and are backed by free technical support.

This problem has the potential to grow as high performance, energy-efficient windows continuously become more popular. The key to solving this problem is education and collaboration between the two industries. By communicating and developing new ideas and alternatives this problem will soon be a thing of the past.

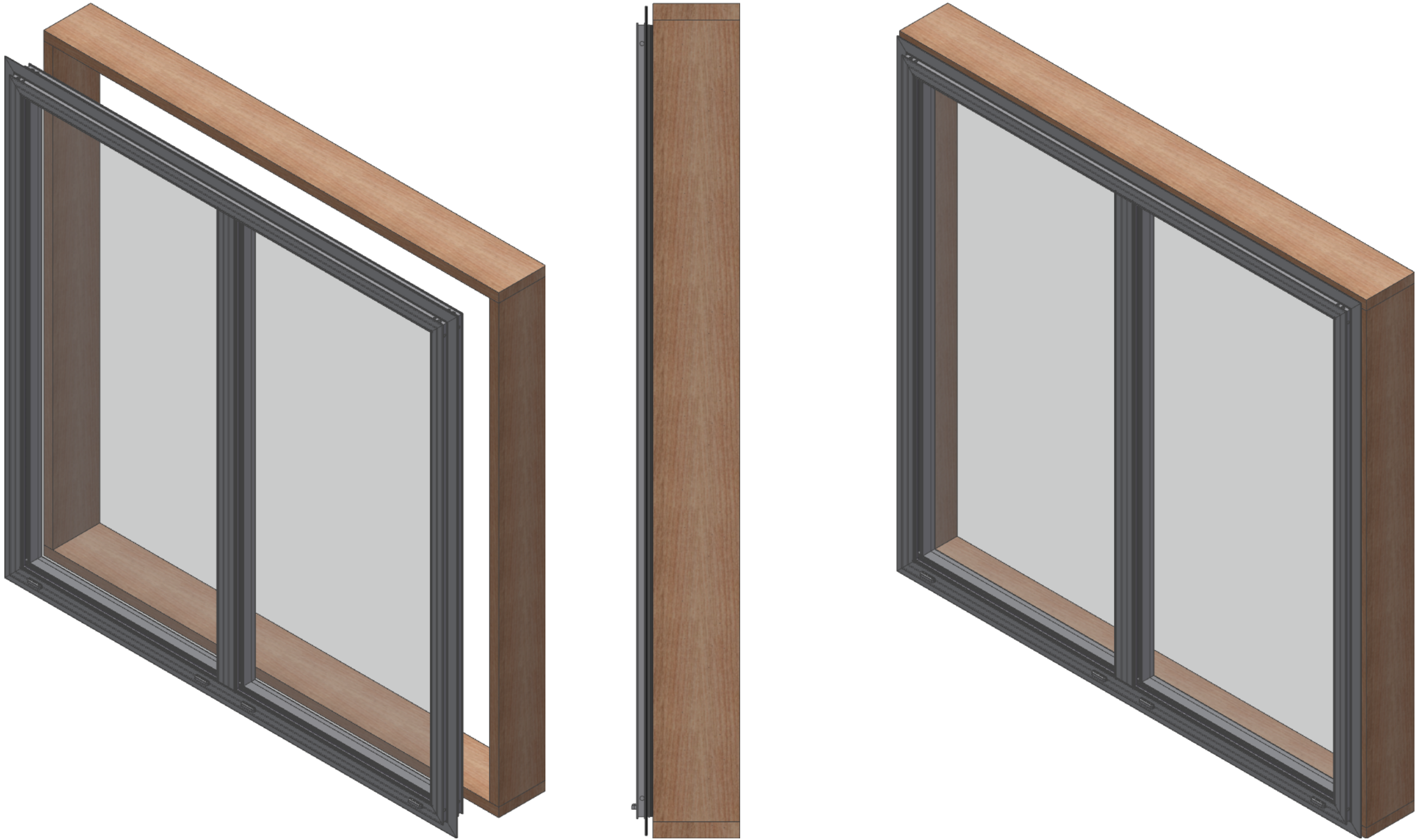
| | | | | |
|---|--|--|-----------------------------------|---------------|
| JOB NAME: HAVEN AT ELGIN | | 2403 South Main Ft. Worth, TX 76101 Phone No. (866) 420-4000 Fax No. (620) 224-3107 | | REVISION |
| ADDRESS 1: | | | | Fixed No Vert |
| ADDRESS 2: 3200 Southwest Freeway Suite 1870 | | | | xxx |
| GENERAL CONTRACTOR: Houston, TX | | The Clerkey Watkins Group | | xxx |
| | | DATE: 09-08-20 | DRN BY: AUTO | |
| | | TIME: 11:47 | SCALE: N/A | |
| | | | DWG TITLE: INSTALLATION | |
| | | | DWG NO. N/A | |
| SHEET I14 | | OF 18 | | |



NOTE: APPLY SEALANT ALONG THE FULL PERIMETER BACKSIDE OF THE WINDOW FIN



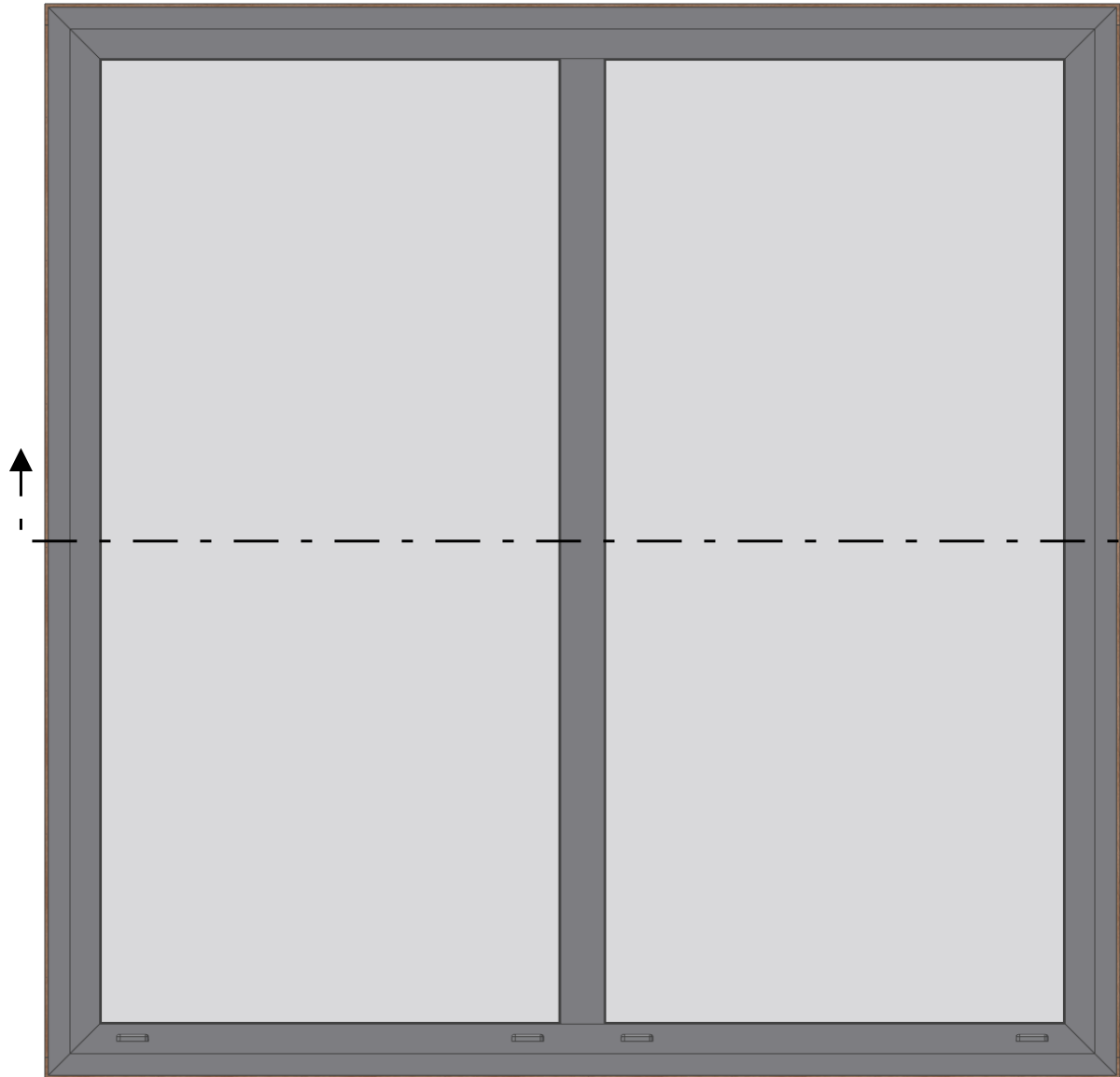
| | | | | |
|---|--|----------------------------|-----------------|----------|
| JOB NAME: HAVEN AT ELGIN | 2403 South Main Ft. Worth, TX 76101 Phone No. (866) 420-4000 Fax No. (620) 224-3107 | | REVISION | |
| | Peerless Architectural Windows & Doors | | Fixed No Vert | |
| ADDRESS 1: 3200 Southwest Freeway Suite 1870 | The Clerkley Watkins Group | | XXX | |
| ADDRESS 2: Houston, TX | DATE: 09-08-20 | SCALE: N/A | DRN BY: AUTO | CHKD BY: |
| GENERAL CONTRACTOR: | TIME: 11:47 | DWG TITLE: INSTALLATION | DWG. NO. | XXX |
| SHEET 115 | OF 18 | N/A | | |



NOTES: SET WINDOW IN CONDITION. PRESS WINDOW FIRMLY AGAINST CONDITION.
USE STANDARD U-SHIMS AND BACKEROD TO RECIEVE THE CORRECT SPACING FROM THE CONDITION.

| | | | | | | | | |
|---------------------|---|---|----------------------|------------------------|----------|-----|----------------------|--|
| SHEET 116 | JOB NAME: HAVEN AT ELGIN | <div>Peerless ARCHITECTURAL WIRING & DATA</div> <div>2403 South Main Ft. Scott, KS 66701 Phone No. (866) 420-4000 Fax No. (620) 224-3107</div> | | | | | REVISION | |
| | ADDRESS 1: 3200 Southwest Freeway Suite 1870 | | | | | | Fixed No Vert | |
| | ADDRESS 2: Houston, TX | DRAWN FOR: The Clerkley Watkins Group | | XXX | | | | |
| | GENERAL CONTRACTOR: 18 | DATE: 09-08-20 | SCALE: N/A | DRN BY: AUTO | CHKD BY: | XXX | | |
| | TIME: 11:47 | DWG TITLE: INSTALLATION | | DWG. NO. | XXX | | | |
| | | | | N/A | XXX | | | |

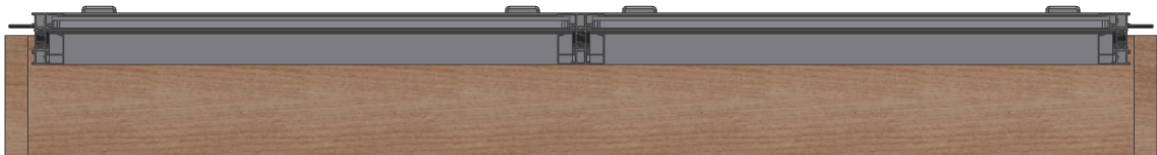
A



A

NOTE: FASTEN WINDOW THROUGH NAIL
FIN OR INTEGRAL TRIM. ENSURE TO APPLY
SEALANT TO THE FASTENED AREA WHEN
FINISHED.

NOTE: SEE TYP. TRIM NOTES FOR MORE
INFORMATION ON INSTALLATION NOTES.
(SECTION A-A)



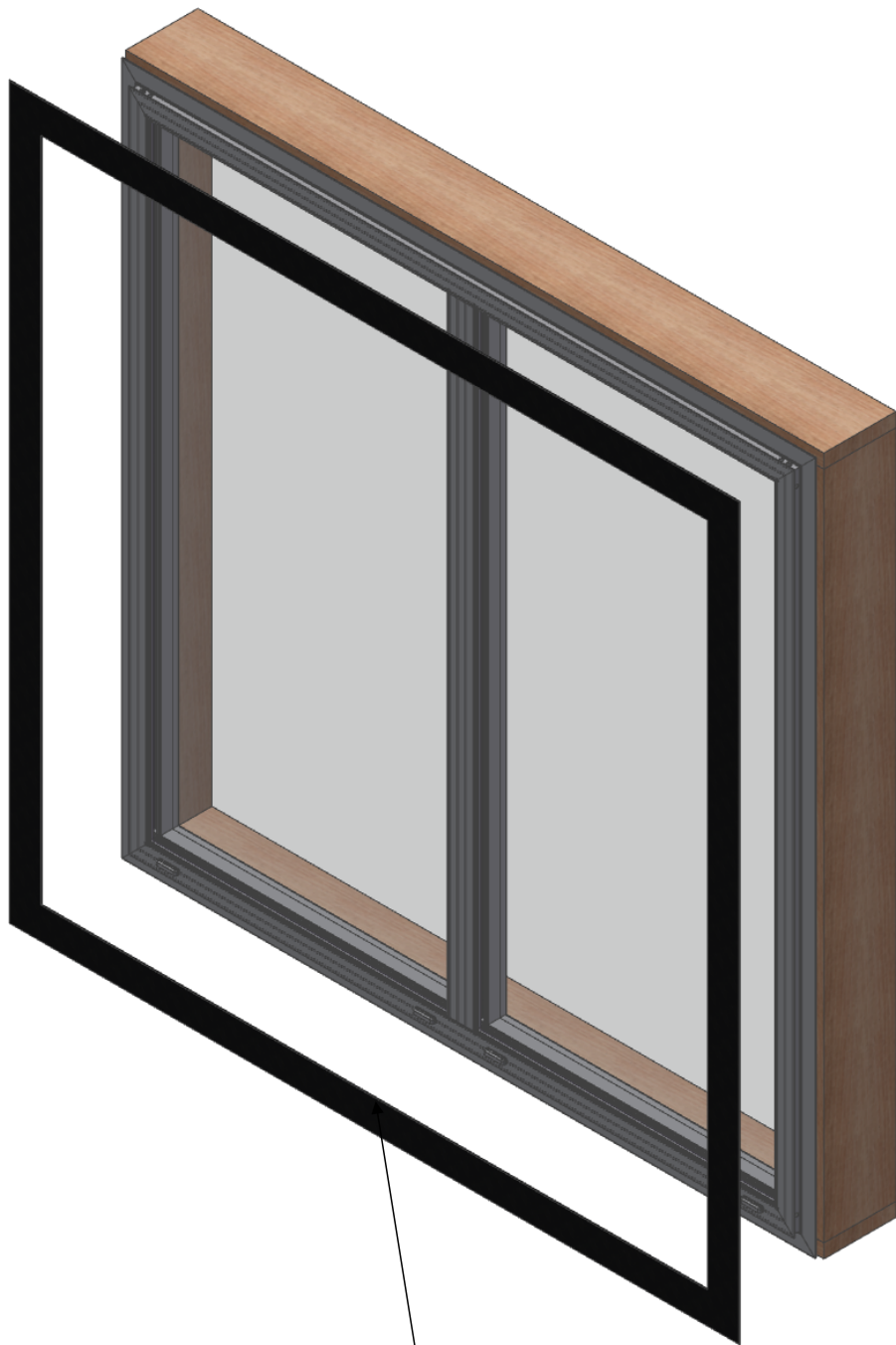
SECTION A-A

FASTENER LOCATION.

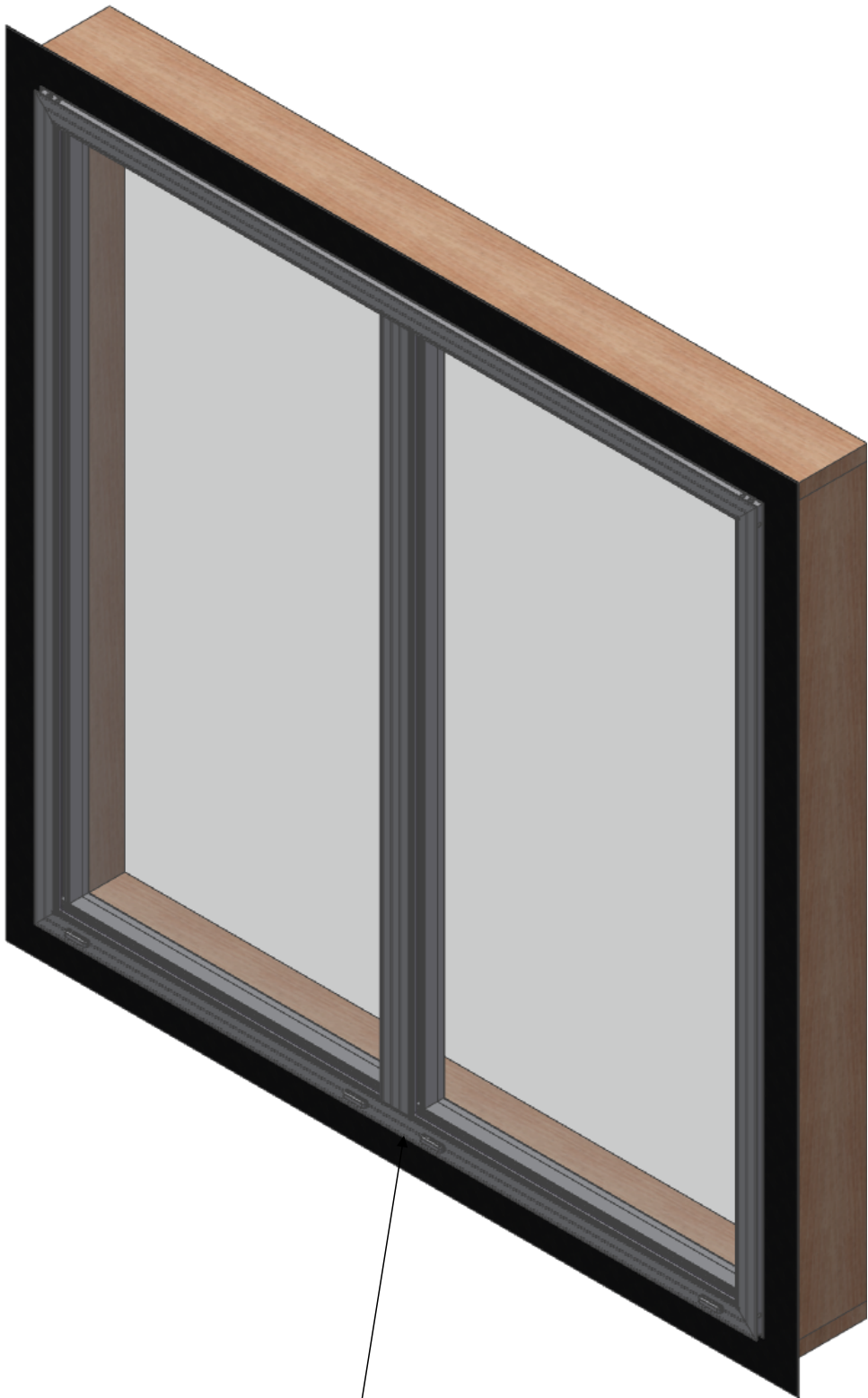


FASTENER LOCATION.

| | | | | | | |
|---------------------|---|---|-----------------------------------|------------------------|----------|---------------|
| SHEET 117 | JOB NAME: HAVEN AT ELGIN | <div><div>2403 South Main Ft. Scott, KS 66701 Phone No. (866) 420-4000 Fax No. (620) 224-3107</div></div> | | | | REVISION |
| | ADDRESS 1: 3200 Southwest Freeway Suite 1870 | | | | | Fixed No Vert |
| OF 18 | ADDRESS 2: Houston, TX | DRAWN FOR: The Clerkey Watkins Group | | | | XXX |
| | GENERAL CONTRACTOR: | DATE: 09-08-20 | SCALE: N/A | DRN BY: AUTO | CHKD BY: | XXX |
| | | TIME: 11:47 | DWG TITLE: INSTALLATION | DWG NO. N/A | XXX | |



FLASHING-CUSTOMER PROVIDED



APPLY FLASHING TO FIN AND CONDITION.

| | | | | | |
|---|--|----------------------------|-----------------|---------------|-----|
| JOB NAME: HAVEN AT ELGIN | 2403 South Main Ft. Worth, TX 76101 Phone No. (866) 420-4000 Fax No. (620) 224-3107 | | | REVISION | |
| | Peerless Architectural Windows & Doors | | | Fixed No Vert | |
| ADDRESS 1: 3200 Southwest Freeway Suite 1870 | The Clerkey Watkins Group | | | XXX | |
| ADDRESS 2: Houston, TX | DATE: 09-08-20 | SCALE: N/A | DRN BY: AUTO | CHKD BY: | XXX |
| GENERAL CONTRACTOR: | TIME: 11:47 | DWG TITLE: INSTALLATION | DWG NO. | N/A | |
| SHEET 118 | OF 18 | | | XXX | |